

# XINBAILONG

Your Professional Hotel Linen Advisor Since 2014



A woman with long brown hair, wearing a white bathrobe, is leaning over a white bathtub in a modern bathroom. The bathroom has marble walls and a glass shower door. A green plant is visible in the background. The word "Bathrobe" is written in large white letters on a dark blue background in the top left corner.

# Bathrobe

- Robes are the perfect before-breakfast and nighttime attire to keep you warm and comfortable while you sip coffee over the morning newspaper or lounge beside a fire before turning down the sheets. It is spacious and comfortable.
- The general texture of hotel used bathrobes includes terry cotton, velour terry cotton, waffle, microfiber, coral fleece, etc. Different materials will your guests a different feeling.

# C01-01 Terry Bathrobe



## The Most Welcomed Material for personal/hotel/resorts use.

- ◆ Model: C01-01
- ◆ Elegant kimono/shawl/hood style available
- ◆ Fabric: 340-400 g/m<sup>2</sup> terry cotton
- ◆ Absorbant, skin friendly, soft and comfortable
- ◆ One generous size fits most, or customization
- ◆ Customization: Support Logo/color, package, etc.
- ◆ Durable for industrial washing.
- ◆ Low shrinkage.

The 100% RINGSPUN COTTON terry bathrobe remove the short fibers and impurities in the cotton fiber, and the loop woven is long and tough. High density terry structure, soft and fluffy feel, suitable for high-end hotels. You can make your bathrobe more personal characteristics by customizing your unique logo.



# C01-02 Velour Bathrobe



## A combination of economical cost & luxury experience

- ◆ Model: C01-02
- ◆ Material: inner cotton velour, outside cotton terry
- ◆ Shawl/kimono collar with front pockets and belt
- ◆ Weight: Fabric 380 g/m<sup>2</sup>
- ◆ Durable for industrial washing
- ◆ Low shrinkage
- ◆ One size fits most, or customization
- ◆ Customization: Support Logo, color, package, etc.
- ◆ Usage: Hotel, Resort, Spa, Home, etc.

Hotel bathrobes are generally single-sided velvet cutting. Fleece cutting refers to cutting the terry to make the surface of the fabric covered with flat fluff. Featuring smooth cotton velour on the outside and absorbent terry towelling on the inside.

This kind bathrobe is more softness , comfortable use and has stronger hygroscopicity compared with ordinary un-cut down bathrobe.



# C01-03 Velour Hooded Bathrobe



The commonly used bathrobe in hotels is a cut down bathrobe, which feels very breathable and soft, and has a major advantage from a health perspective. It can better absorb sweat from the skin and prevent people from catching cold. Of course, size is also very important. Hotels should choose a looser size when choosing hotel bathrobe sizes. The most popular type is the waist lace up type, which can also be kept loose for guests with relatively fat waist and abdomen.

This bathrobe with hood adds a personalized hat that is more suitable for young people.

- ◆ Model: C01-03
- ◆ Elegant kimono/shawl/hood style available
- ◆ Fabric: 340-400 g/m<sup>2</sup> terry cotton
- ◆ Skin friendly, soft and comfortable
- ◆ One generous size fits most, or customization
- ◆ Customization: Support Logo/color, package, etc.
- ◆ Durable for industrial washing.
- ◆ Low shrinkage.



● Velour outside



● Terry inside



# C01-04 Waffle Bathrobe

**Specially good for Hot Season/Tropical areas.**



- ◆ Model: C01-04
- ◆ Elegant kimono/shawl-style available
- ◆ Quick drying 100% cotton
- ◆ Light weight 200gsm fabric, breathable structure
- ◆ One size fits most, or customization
- ◆ Durable for industrial washing
- ◆ Low shrinkage
- ◆ Customization: Support Logo/color, package, etc.
- ◆ Usage: Hotel, Resort, Spa, Home, etc.

- ✓ The waffle bathrobe uses all cotton yarn for 20s × 10s as raw material. It is woven on a rapier loom with hidden weave 56 × 55.
- ✓ And it has been processed by fine processes such as dyeing and finishing. Its quality is almost impeccable. It is known as the best among cotton fabrics.
- ✓ You can name it **Breathable bathrobe**.



# C01-05 Microfiber Bathrobe



**A robe with premium luxury wearing experience.**

- ◆ Model: C01-05
  - ◆ Material: microfiber shell, velour lining
  - ◆ Double layer material, shaped and fluffy
  - ◆ Shawl/hood collar with front pockets and belt
  - ◆ One general size fits most, or customization
  - ◆ Color: white, black, grey, brown, beige, pink
  - ◆ Customization: Support Logo, color, package, etc.
  - ◆ Usage: 4-5 star hotel/resorts/high end spa, etc.
- ✓ The most remarkable feature of microfiber is that its single filament linear density is much lower than that of conventional ordinary fiber, and the smallest one can reach 0.0001 dtex. So it feels soft, delicate and flexible.
  - ✓ This shawl collar microfiber bathrobe can bring you a soft and skin-friendly experience every time.
  - ✓ It can absorb moisture quickly. Double-needle stitched pockets at both sides are designed to keep warm and comfortable.



# C01-06 Coral Fleece Bathrobe



**The most economical robe with super soft fabric.**

- ◆ Model: C01-06
  - ◆ Material: 100% coral fleece( polyester)
  - ◆ Shawl/hood collar with front pockets and belt
  - ◆ Size: S, M, L, XL, XXL, or customization
  - ◆ Color: white, black, grey, black, khaki, etc.
  - ◆ Customization: Support Logo, color, package, etc.
  - ◆ Usage: Economical hotel, spa, or personal use
- ✓ Coral velvet, as the name implies, is a coral shaped textile fabric with colorful colors and good coverage. It is a new type of fabric with fine texture, soft feel, not easy to shed hair, not pilling, not fading, no irritation to skin, and no allergy.
- ✓ Beautiful appearance and rich colors.
- ✓ These Super Soft Coral Velvet Robes are cosy and warm whilst still being lightweight, and ideal for cooler weather.





# Size Chart

1. For Hotel/Spa use, generally you can choose the one size fits the most, that's the size L:  
length 120cm, chest 130cm, sleeves 52cm, cuff 20cm, belt 200cm.
2. For Retailing use, you can choose any sizes you need. The MOQ is 30 pieces of each size .  
Any other sizes can be made according to your order.

Asia					
Size	Length	Chest	Shoulder	Sleeve	Cuff
S	43"(110cm)	47"(120cm)	20"(50cm)	19"(48cm)	8"(20cm)
M	45"(115cm)	49"(125cm)	20"(50cm)	20"(50cm)	8"(20cm)
L	47"(120cm)	51"(130cm)	21"(54cm)	20"(52cm)	8"(20cm)
XL	49"(125cm)	53"(135cm)	21"(54cm)	22"(55cm)	8"(20cm)
XXL	51"(130cm)	55"(140cm)	23"(58cm)	23"(58cm)	9"(22cm)
Africa & Europe & America					
Size	Length	Chest	Shoulder	Sleeve	Cuff
M	47"(120cm)	51"(130cm)	21"(54cm)	20"(52cm)	8"(20cm)
L	49"(125cm)	53"(135cm)	21"(54cm)	22"(55cm)	8"(20cm)
XL	51"(130cm)	55"(140cm)	23"(58cm)	23"(58cm)	9"(22cm)



- Size measurement

- Way to measure

# Customization Service

## Customized Bathrobes for Hotels and Spas

A bathrobe customized with your hotel or spa's logo really sets it apart from any old generic robe. It gives the guest a feel of importance and luxury seeing a beautifully embroidered logo on their robe. They'll want to wear it with pride during their stay, and will always enjoy the wonderful memories evoked when they wrap themselves in the softness at home long after their vacation has ended. A personalized bathrobe at a spa shows that you care enough to provide your own unique product to your customers, which makes them feel even more valued. You can add custom slippers for another touch of luxury!

[1 pc of sample with logo embroidery is acceptable without extra mock up fees.](#)

[Contact us for FREE LOGO MOCK UP NOW!](#)



✓ Custom Logo on full set, the most popular one



Custom Logo+label on neck



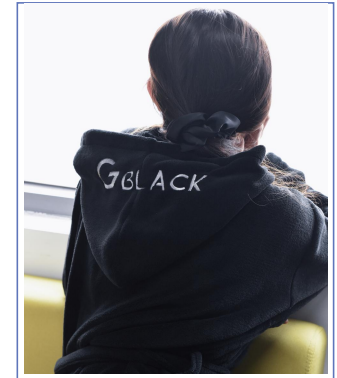
Custom Logo on Sleeves



Custom Logo on back



Custom Logo on front pockets



Custom Logo on Hood

# Customization Service

## 2. Package Customization:

If you want to customize your package for gift/reselling, etc, pls feel free to contact us.

We provide free opp bag package and free sku label service.

Contact us to start your business NOW!



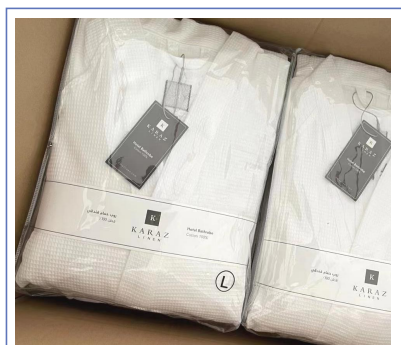
Custom button bag+handtag



Custom zipper bag for online retailing



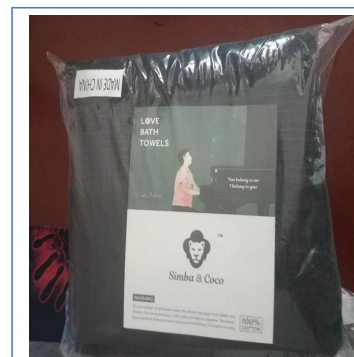
Custom zipper bag with brand ads



Custom handtags+chest ribbon



Custom cardboard box with logo



Custom opp bag for online retailing



# Care Instruction

Several improper washing methods can easily cause damage:

- 1) Incorrect feeding time during washing: feed in case of insufficient water in the machine, pay special attention to bleach chemicals, which will easily cause the detergent to concentrate on parts of the cloth and cause damage.
- 2) Improper use of bleach. In case of misuse of detergent, appropriate products should be selected for different stains. 3) Excessive amount of washing, incomplete cleaning, and residue on clothes.
- 3) Clothes with zippers and clothes easy to hook and pilling are mixed.

Common problems and solutions during washing:

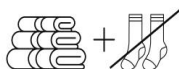
1. There is rust stain on the bed sheet (towel). After being treated with oxalic acid, put it into the machine for washing. After washing, it is found that the rust stain is still not removed. Acidizing treatment is the last process in the laundry process. The quality of the acid agent is very important in the laundry products. It can make up for the defects and disadvantages in the previous process, and make the washed products perfect and reach the ideal state. Some laundries often use oxalic acid, which is insufficient. Calcium oxalate precipitation will be formed in the unsoftened water and adsorbed on the fabric, making the fabric gray, hard and brittle. Removing rust with oxalic acid is not clean and temporary. This reaction  $\text{Fe}^{+++}$ (brown)  $\text{Fe}^{++}$ (light green) is a reversible reaction. After drying, the remaining  $\text{Fe}^{++}$  on the fabric will become  $\text{Fe}^{+++}$  again after air oxidation. Only by adding other acidic complexing agents or using other rust removal compounds in oxalic acid, can it form a stable complex or chelate.
2. When washing the small square towel in the catering department, the special whitening powder for laundry, chlorine bleaching powder and sodium hypochlorite were used, but the effect was not good. The reasons for serious ash were as follows:
  - ① Before washing, the water quality in the washing square towel area should be known first, whether it is soft water or hard water. If it is hard water, it means that the content of calcium, magnesium and metal ions is high, so the softener must be added during washing, and the neutralizer must be used during post-treatment.
  - ② When washing towels, it is better to use oxygen bleaching powder and washing powder together. Do not use chlorine bleaching powder, because chlorine bleaching powder is strong oxidizing, which is easy to damage towels.
  - ③ Hard water can produce calcium and magnesium ions to form calcium and magnesium soap. Calcium and magnesium soap itself is a kind of dirt, commonly known as soap scale or alkali flower. It is difficult to remove the residual scale of calcium magnesium soap. If it is accumulated for a long time, it will destroy the fiber and pigment, make the clothes and cotton fabrics become slightly hard, lose luster, and change the color light. It is very harmful to the fiber, such as brittle, broken, and reduced fastness. Iron exists in the form of ions or ionic compounds in water. If it is deposited on the fabric or becomes brown spots, it will make the white fabric yellow as a whole, darken the color of the colored fabric, and have a certain catalytic effect on the bleach, and even cause the fabric to break.



WE RECOMMEND  
WASHING AND DRYING  
YOUR TOWELS BEFORE  
FIRST USE.



WASH WITH WARM  
WATER AND A MILD  
DETERGENT.



WASH TOWELS  
SEPARATELY FROM  
OTHER ITEMS OF  
CLOTHING TO AVOID  
TRANSFER OF LINT TO  
OTHER CLOTHING.



DO NOT USE FABRIC  
SOFTENERS AS THEY  
DECREASE THE LIFE AND  
FLUFFINESS OF YOUR  
TOWEL BY BREAKING  
DOWN THE COTTON  
FIBERS.



DRY IMMEDIATELY  
AFTER WASHING TO  
AVOID MILDEW. DO NOT  
OVERDRY.



ALWAYS HANG DAMP  
TOWELS IN GOOD AIR  
FLOW.